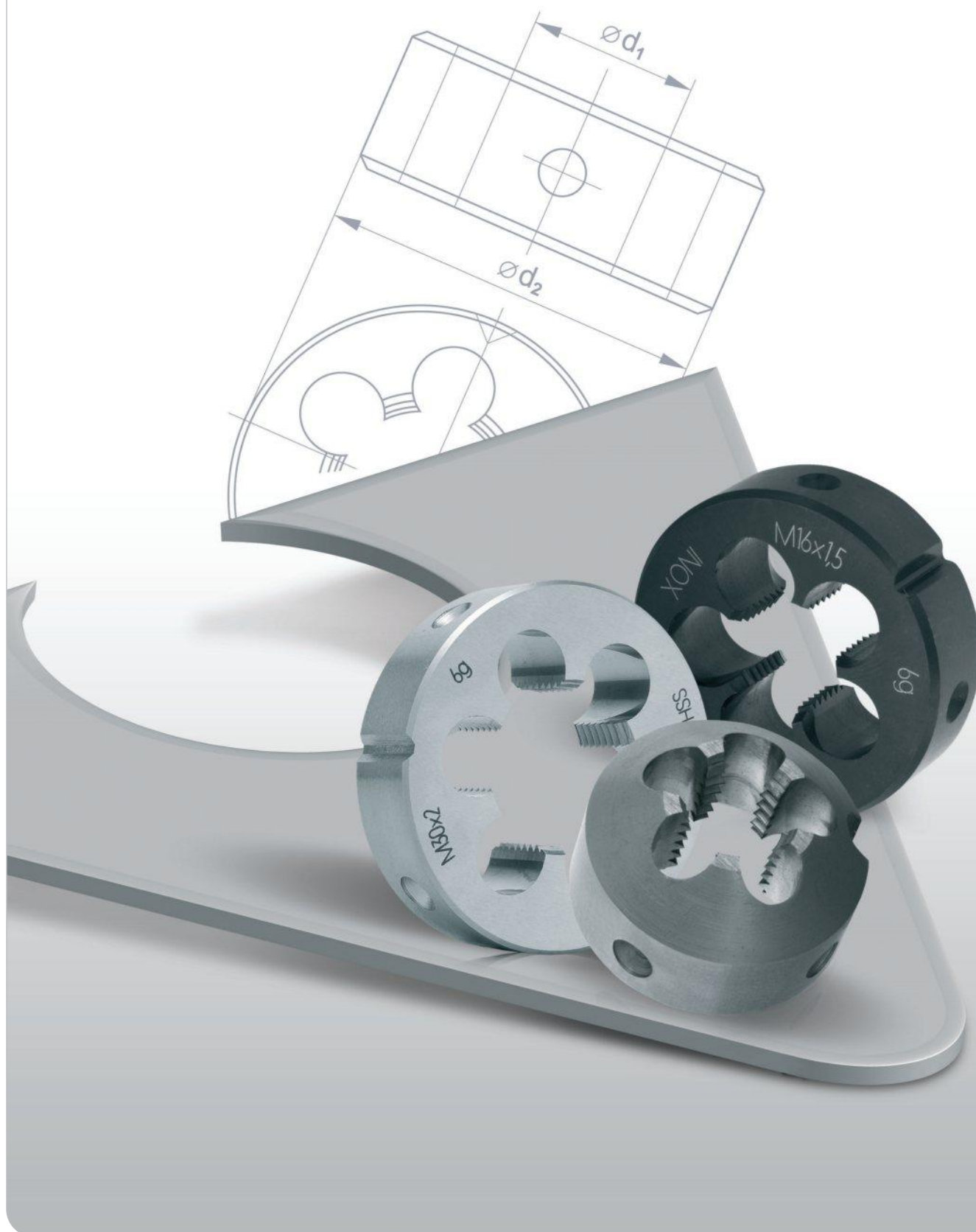


# Narzynki

Screwing dies  
Schneideisen



**NARZYNKI**  
SCREWING DIES  
SCHNEIDEISEN

Strona  
Page  
Seite

**TABELA DOBORU NARZĘDZI** / TOOLS SELECTION TABLE / WERKZEUGE SELEKTION TABELLE

**141**

**STRONY KATALOGOWE** / CATALOGUE PAGES / KATALOGSEITEN

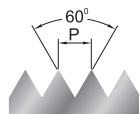
**142-148**

|            |                |                   |     |         |      |        |                |
|------------|----------------|-------------------|-----|---------|------|--------|----------------|
| <b>M</b>   | DIN-EN 22 568  | HSS, LH HSS, HSSE | 800 | 800 SPN | INOX | Ms     | <b>142</b>     |
|            | ~DIN-EN 22 568 | D-25, D-38 HSS    |     |         |      | 800    | <b>143</b>     |
|            | NHMg           | HSS               |     |         |      | 800 Ms | <b>144</b>     |
| <b>MF</b>  | DIN-EN 22 568  | HSS, HSSE         | 800 | 800 SPN | INOX | Ms     | <b>145-147</b> |
|            | ~DIN-EN 22 568 | D-25, D-38 HSS    |     |         |      | 800    | <b>148</b>     |
|            | NHMg           | HSS               |     |         |      | 800 Ms | <b>149</b>     |
| <b>UNC</b> | DIN-EN 22 568  | HSS               |     |         |      | 800    | <b>150</b>     |
| <b>UNF</b> | DIN-EN 22 568  | HSS               |     |         |      | 800    | <b>151</b>     |
| <b>G</b>   | DIN-EN 24231   | HSS, LH HSS, HSSE | 800 |         | INOX | Ms     | <b>152</b>     |
|            | DIN-EN 22 568  | HSS               |     |         |      | 800 Ms | <b>153</b>     |
| <b>R</b>   | DIN-EN 24 230  | HSS               |     |         |      | 800    | <b>154</b>     |
| <b>BSW</b> | DIN-EN 22 568  | HSS, LH HSS       |     |         |      | 800    | <b>155</b>     |
| <b>BSF</b> | DIN-EN 22 568  | HSS               |     |         |      | 800    | <b>156</b>     |
| <b>NPT</b> | ~DIN-EN 24 230 | HSS               |     |         |      | 800    | <b>157</b>     |
| <b>Pg</b>  | DIN-EN 22 568  | HSS               |     |         |      | 800    | <b>158</b>     |

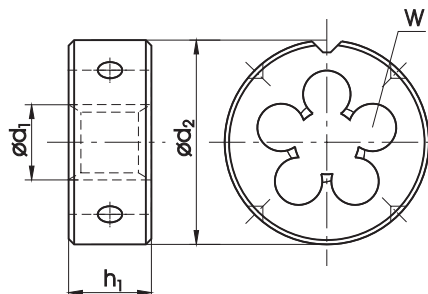
TABELA DOBORU / SELECTION TABLE / SELEKTION TABELLE

|   |  |  |  |            |  | Norma<br>Norm<br>Norma                     | Strona / Page / Seite                                       |
|---|--|--|--|------------|--|--|---|
| DIN-EN 22 568, DIN-EN 24 231, DIN-EN 24 230 |  |  |  | NHMg       |  |  |   |
| 142-143                                     | 142  | 142  | 142  | 144        | 144  | <b>M</b>                                   |   |
| 145-148                                     | 145-147  | 145-148  | 145-148  | 149        | 149  | <b>MF</b>                                  |   |
| 150   |  |  |  |            |  | <b>UNC</b>                                 |   |
| 151   |  |  |  |            |  | <b>UNF</b>                                 |   |
| 152   |  | 152  | 152  | 153        | 153  | <b>G</b>                                   |   |
| 154   |  |  |  |            |  | <b>R</b>                                   |   |
| 155   |  |  |  |            |  | <b>BSW</b>                                 |   |
| 156   |  |  |  |            |  | <b>BSF</b>                                 |   |
| 157   |  |  |  |            |  | <b>NPT</b>                                 |   |
| 158   |  |  |  |            |  | <b>Pg</b>                                  |   |
| <b>800</b>                                  | <b>800 SPN</b>   | <b>INOX</b>  | <b>Ms</b>  | <b>800</b> | <b>Ms</b>  | <b>Nazwa<br/>Name<br/>Bezeichnung</b>      | <b>Wykonanie<br/>Execution<br/>Ausführung</b>               |
|   | SPN - skośna powierzchnia natarcia<br>SPN - spiral point<br>SPN - Schälanschnitt | SPN - skośna powierzchnia natarcia<br>SPN - spiral point<br>SPN - Schälanschnitt | Docierane; specjalna geometria<br>Lapped; special geometry<br>Geläppt; besondere Geometrie |            | Docierane; specjalna geometria<br>Lapped; special geometry<br>Geläppt; besondere Geometrie |  |   |
| HSS   | HSS  | HSSE   | HSS  | HSS        | HSS  | <b>Materiał<br/>Material<br/>Werkstoff</b> | <b>Rodzaj powłoki<br/>Coating<br/>Beschichtung</b>          |
|   |  | <b>OX</b>  |  |            |  |  |   |
| 1,75P                                       | 1,75P  | 2,25P  | 1,25P  | 1,75P      | 1,25P  | <b>Nakrój<br/>Chamfer<br/>Anschnitt</b>    | <b>Chłodziwo<br/>Coolant<br/>Kühlmittel</b>                 |
| E/O   | E/O  | E/O  | E/O  | E/O        | E/O  |  |   |
| <b>Vc [m/min]</b>                           |  |  |  |            |  |  | <b>Grupa materiałowa / Material group / Werkstoffgruppe</b> |
| 1-8   | 1-8  | 1-8  |  | 1-8        |  | <b>P</b>                                   |   |
| 1-6   | 1-6  | 1-6  |  | 1-6        |  | 1.1  |   |
| 1-6   | 1-6  | 1-6  |  | 1-6        |  | 1.2  |   |
| 1-2   | 1-2  | 1-2  |  | 1-2        |  | 1.3  |   |
|   |  |  |  |            |  | 1.4  |   |
|   |  |  |  |            |  | 1.5  |   |
|   |  |  |  |            |  | 1.6  |   |
|   |  |  |  |            |  | <b>M</b>                                   |   |
|   |  | 1-5  |  |            |  | 2.1  |   |
|   |  | 1-5  |  |            |  | 2.2  |   |
|   |  |  |  |            |  | 2.3  |   |
|   |  |  |  |            |  | <b>K</b>                                   |   |
|   |  |  |  |            |  | 3.1  |   |
|   |  |  |  |            |  | 3.2  |   |
|   |  |  |  |            |  | 3.3  |   |
|   |  |  |  |            |  | <b>N</b>                                   |   |
|   | 5-18   | 5-18   |  |            |  | 4.1  |   |
| 5-10  | 5-10   | 5-15   |  | 5-10       |  | 4.2  |   |
|   |  | 5-15   |  |            |  | 4.3  |   |
|   |  |  |  |            |  | 4.4  |   |
|   |  |  | 6-10   |            | 6-10   | 4.5  |   |
|   |  |  | 6-10   |            | 6-10   | 4.6  |   |
| 1-5   |  |  |  | 1-5        |  | 4.7  |   |
| 1-5   |  |  |  | 1-5        |  | 4.8  |   |
| 1-5   |  |  |  | 1-5        |  | 4.9  |   |
|   |  | 1-5  |  |            |  | 4.10                                       |   |
|   |  |  |  |            |  | 4.11                                       |   |
| 1-5   |  | 1-5  |  | 1-5        |  | 4.12                                       |   |
|   |  |  |  |            |  | 4.13                                       |   |
|   |  |  |  |            |  | <b>S</b>                                   |   |
|   |  |  |  |            |  | 5.1  |   |
|   |  |  |  |            |  | 5.2  |   |
|   |  |  |  |            |  | 5.3  |   |
|   |  |  |  |            |  | 5.4  |   |
|   |  |  |  |            |  | <b>H</b>                                   |   |
|   |  |  |  |            |  | 6.1  |   |
|   |  |  |  |            |  | 6.2  |   |
|   |  |  |  |            |  | 6.3  |   |
|   |  |  |  |            |  | 6.4  |   |

## Gwint metryczny zwykły ISO DIN-13

ISO Metric coarse thread DIN-13  
Metrisches ISO-Regelgewinde DIN-13

HSS HSSE



## DIN-EN 22 568



LH

| Nazwa / Name / Bezeichnung                        |      |                                  |   |       |       | 800       | 800       | 800 SPN   | INOX      | Ms        |
|---|------|----------------------------------|---|-------|-------|-----------|-----------|-----------|-----------|-----------|
| Materiał obrabiany / Material / Werkstoff         |      |                                  |   |       |       |           |           |           |           |           |
| Rodzaj materiału / Quality of material / Qualität |      |                                  |   |       |       | HSS       | HSS       | HSS       | HSSE      | HSS       |
| Wykonanie / Execution / Ausführung                |      |                                  |   |       |       |           | LH        |           |           |           |
| Nakrój / Chamfer / Anschnitt                      |      |                                  |   |       |       | 1,75P     | 1,75P     | 1,75P     | 2,25P     | 1,25P     |
| Tolerancja / Tolerance / Toleranz                 |      |                                  |   |       |       | 6g        | 6g        | 6g        | 6g        | 6g        |
| M   | P    | Ød <sub>2</sub> x h <sub>1</sub> | W |       | INDEX | N1-121001 | N1-111001 | N1-141001 | N2-188001 | N1-164001 |
| M 1   | 0,25 | 16 x 5                           | 3 | 0,96  | 0010  | ●         |           |           |           |           |
| M 1,1   | 0,25 | 16 x 5                           | 3 | 1,05  | 0011  | ●         |           |           |           |           |
| M 1,2   | 0,25 | 16 x 5                           | 3 | 1,15  | 0012  | ●         |           |           |           |           |
| M 1,4   | 0,3  | 16 x 5                           | 3 | 1,35  | 0014  | ●         |           |           |           |           |
| M 1,6   | 0,35 | 16 x 5                           | 3 | 1,55  | 0016  | ●         |           |           |           |           |
| M 1,8   | 0,35 | 16 x 5                           | 3 | 1,75  | 0018  | ●         |           |           |           |           |
| M 2   | 0,4  | 16 x 5                           | 3 | 1,95  | 0020  | ●         |           |           |           |           |
| M 2,2   | 0,45 | 16 x 5                           | 3 | 2,15  | 0022  | ●         |           |           |           |           |
| M 2,5   | 0,45 | 16 x 5                           | 3 | 2,42  | 0025  | ●         |           |           |           |           |
| M 3   | 0,5  | 20 x 5                           | 3 | 2,92  | 0030  | ●         |           | ●         | ●         | ●         |
| M 3,5   | 0,6  | 20 x 5                           | 3 | 3,41  | 0035  | ●         | ○         | ●         | ○         | ○         |
| M 4   | 0,7  | 20 x 5                           | 3 | 3,90  | 0040  | ●         | ●         | ●         | ●         | ●         |
| M 4,5   | 0,75 | 20 x 7                           | 3 | 4,40  | 0045  | ●         | ○         | ●         | ○         | ○         |
| M 5   | 0,8  | 20 x 7                           | 3 | 4,90  | 0050  | ●         | ●         | ●         | ●         | ●         |
| M 6   | 1    | 20 x 7                           | 4 | 5,88  | 0060  | ●         | ●         | ●         | ●         | ●         |
| M 7   | 1    | 25 x 9                           | 4 | 6,88  | 0070  | ●         | ○         | ●         | ○         | ○         |
| M 8   | 1,25 | 25 x 9                           | 4 | 7,86  | 0080  | ●         | ●         | ●         | ●         | ●         |
| M 9   | 1,25 | 25 x 9                           | 4 | 8,86  | 0090  | ●         | ○         | ●         | ○         | ○         |
| M 10  | 1,5  | 30 x 11                          | 4 | 9,85  | 0100  | ●         | ●         | ●         | ●         | ●         |
| M 11  | 1,5  | 30 x 11                          | 4 | 10,85 | 0110  | ●         | ○         | ●         | ○         | ○         |
| M 12  | 1,75 | 38 x 14                          | 4 | 11,83 | 0120  | ●         | ●         | ●         | ●         | ○         |
| M 14  | 2    | 38 x 14                          | 4 | 13,82 | 0140  | ●         | ●         | ●         | ●         | ○         |
| M 16  | 2    | 45 x 18                          | 5 | 15,82 | 0160  | ●         | ●         | ●         | ●         | ○         |
| M 18  | 2,5  | 45 x 18                          | 5 | 17,79 | 0180  | ●         | ●         | ●         | ●         | ○         |
| M 20  | 2,5  | 45 x 18                          | 5 | 19,79 | 0200  | ●         | ●         | ●         | ●         | ○         |
| M 22  | 2,5  | 55 x 22                          | 5 | 21,79 | 0220  | ●         | ●         | ●         | ●         | ○         |
| M 24  | 3    | 55 x 22                          | 5 | 23,76 | 0240  | ●         | ●         | ●         | ●         | ○         |
| M 27  | 3    | 65 x 25                          | 5 | 26,76 | 0270  | ●         | ●         | ●         | ●         | ○         |
| M 30  | 3,5  | 65 x 25                          | 6 | 29,73 | 0300  | ●         | ●         | ●         | ●         | ○         |
| M 33  | 3,5  | 65 x 25                          | 6 | 32,73 | 0330  | ●         | ●         | ●         | ○         | ○         |
| M 36  | 4    | 65 x 25                          | 7 | 35,70 | 0360  | ●         | ●         | ●         | ○         | ○         |
| M 39  | 4    | 75 x 30                          | 7 | 38,70 | 0390  | ●         | ○         | ○         | ○         | ○         |
| M 42  | 4,5  | 75 x 30                          | 7 | 41,68 | 0420  | ●         | ○         | ○         | ○         | ○         |
| M 45  | 4,5  | 90 x 36                          | 7 | 44,68 | 0450  | ●         | ○         | ○         | ○         | ○         |
| M 48  | 5    | 90 x 36                          | 7 | 47,66 | 0480  | ●         | ○         | ○         | ○         | ○         |
| M 52  | 5    | 90 x 36                          | 8 | 51,66 | 0520  | ●         | ○         | ○         | ○         | ○         |
| M 56  | 5,5  | 105 x 36                         | 6 | 55,65 | 0560  | ○         | ○         | ○         | ○         | ○         |
| M 60  | 5,5  | 105 x 36                         | 8 | 59,65 | 0600  | ○         | ○         | ○         | ○         | ○         |
| M 64  | 6    | 120 x 36                         | 7 | 63,62 | 0640  | ○         | ○         | ○         | ○         | ○         |
| M 68  | 6    | 120 x 36                         | 8 | 67,62 | 0680  | ○         | ○         | ○         | ○         | ○         |

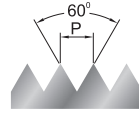
Przykład zamawiania / Example of order / Beispiel einer Bestellung:

N1-121001-0030  
DIN-EN 22 568 M3 6g HSS 800

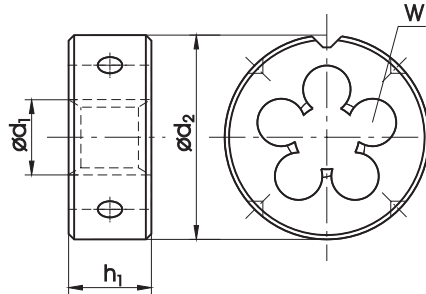
- Dostępne z magazynu, cena w cenniku  
Available from stock, the price in the price list / Ab Lager lieferbar, der Preis in der Preisliste
- Do szybkiej dostawy, cena na zapytanie  
For quick delivery, price on request / Für die schnelle Lieferung, Preis auf Anfrage

**Gwint metryczny zwykły ISO DIN-13**

ISO Metric coarse thread DIN-13  
 Metrisches ISO-Regelgewinde DIN-13



HSS



**~DIN-EN 22 568**



| <b>Nazwa / Name / Bezeichnung</b>                        |      |                              |   |  | 800   | 800       |           |   |  |
|--|------|------------------------------|---|--|-------|-----------|-----------|---|--|
| <b>Materiał obrabiany / Material / Werkstoff</b>         |      |                              |   |  |       |           |           |   |  |
| <b>Rodzaj materiału / Quality of material / Qualität</b> |      |                              |   |  | HSS   | HSS       |           |   |  |
| <b>Wykonanie / Execution / Ausführung</b>                |      |                              |   |  | D25   | D38       |           |   |  |
| <b>Nakrój / Chamfer / Anschnitt</b>                      |      |                              |   |  | 1,75P | 1,75P     |           |   |  |
| <b>Tolerancja / Tolerance / Toleranz</b>                 |      |                              |   |  | 6g    | 6g        |           |   |  |
| M  | P    | $\varnothing d_2 \times h_1$ | W |  | INDEX | N1-121251 | N1-121381 |   |  |
| M 3  | 0,5  | 25 x 9                       | 3 |  | 2,92  | 0030      | ●         |   |  |
| M 4  | 0,7  | 25 x 9                       | 3 |  | 3,90  | 0040      | ●         |   |  |
| M 5  | 0,8  | 25 x 9                       | 3 |  | 4,90  | 0050      | ●         |   |  |
| M 6  | 1    | 25 x 9                       | 3 |  | 5,88  | 0060      | ●         |   |  |
| M 7*   | 1    | 25 x 9                       | 4 |  | 6,88  | 0070*     |           |   |  |
| M 8*   | 1,25 | 25 x 9                       | 4 |  | 7,86  | 0080*     |           |   |  |
| M 10   | 1,5  | 25 x 9                       | 5 |  | 9,85  | 0100      | ●         |   |  |
| M 12   | 1,75 | 25 x 9                       | 6 |  | 11,83 | 0120      | ●         |   |  |
| M 16   | 2    | 38 x 14                      | 6 |  | 15,82 | 0160      |           | ● |  |
| M 20   | 2,5  | 38 x 14                      | 6 |  | 19,79 | 0200      |           | ● |  |

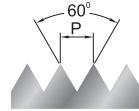
**\* Gabaryty standardowe dostępne pod indeksem N1-121001**  
 \* standard overall dimensions available with catalogue number N1-121001  
 \* Standardabmessungen sind unter dem Index N1-121001 erhältlich

**Oprawki do narzynek na stronie 244**  
 Die stocks at 244 page  
 Schneisenhalter auf der Seite 244

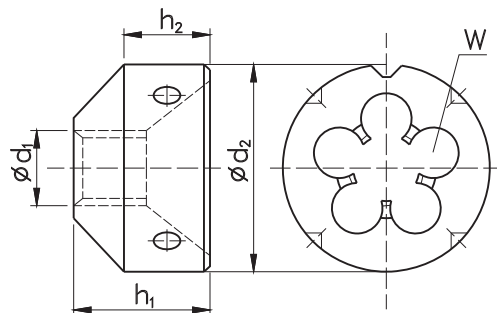
**Przykład zamawiania / Example of order / Beispiel einer Bestellung:**  
 N1-121251-0030  
 DIN-EN 22 568 M3 6g HSS 800 D25

● **Dostępne z magazynu, cena w cenniku**  
 Available from stock, the price in the price list / Ab Lager lieferbar, der Preis in der Preisliste  
 ○ **Do szybkiej dostawy, cena na zapytanie**  
 For quick delivery, price on request / Für die schnelle Lieferung, Preis auf Anfrage

## Gwint metryczny zwykły ISO DIN-13

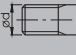
ISO Metric coarse thread DIN-13  
Metrisches ISO-Regelgewinde DIN-13

HSS



## NHMg



| Nazwa / Name / Bezeichnung                        |      |                 |                |                |   |   | 800   | Ms        |           |  |
|---|------|-----------------|----------------|----------------|---|---|-------|-----------|-----------|--|
| Materiał obrabiany / Material / Werkstoff         |      |                 |                |                |   |   |       |           |           |  |
| Rodzaj materiału / Quality of material / Qualität |      |                 |                |                |   |   | HSS   | HSS       |           |  |
| Wykonanie / Execution / Ausführung                |      |                 |                |                |   |   |       |           |           |  |
| Nakrój / Chamfer / Anschnitt                      |      |                 |                |                |   |   | 1,75P | 1,25P     |           |  |
| Tolerancja / Tolerance / Toleranz                 |      |                 |                |                |   |   | 6g    | 6g        |           |  |
| M   | P    | Ød <sub>2</sub> | h <sub>1</sub> | h <sub>2</sub> | W |  | INDEX | K1-821001 | K1-864001 |  |
| M 3   | 0,5  | 20              | 12             | 7              | 3 | 2,92  | 0030  | ○         | ○         |  |
| M 4   | 0,7  | 20              | 12             | 7              | 3 | 3,90  | 0040  | ○         | ○         |  |
| M 5   | 0,8  | 20              | 12             | 7              | 3 | 4,90  | 0050  | ○         | ○         |  |
| M 6   | 1    | 20              | 12             | 7              | 4 | 5,88  | 0060  | ●         | ○         |  |
| M 8   | 1,25 | 25              | 15             | 9              | 4 | 7,86  | 0080  | ●         | ○         |  |
| M 10  | 1,5  | 25              | 15             | 9              | 5 | 9,85  | 0100  | ●         | ○         |  |
| M 12  | 1,75 | 30              | 18             | 11             | 5 | 11,83   | 0120  | ●         | ○         |  |
| M 14  | 2    | 30              | 18             | 11             | 5 | 13,82   | 0140  | ○         | ○         |  |
| M 16  | 2    | 38              | 22             | 14             | 6 | 15,82   | 0160  | ○         | ○         |  |
| M 18  | 2,5  | 38              | 22             | 14             | 6 | 17,79   | 0180  | ○         | ○         |  |
| M 20  | 2,5  | 45              | 28             | 18             | 7 | 19,79   | 0200  | ○         | ○         |  |
| M 22  | 2,5  | 45              | 28             | 18             | 6 | 21,79   | 0220  | ○         | ○         |  |
| M 24  | 3    | 45              | 28             | 18             | 8 | 23,76   | 0240  | ○         | ○         |  |

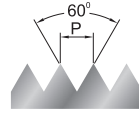
Przykład zamawiania / Example of order / Beispiel einer Bestellung:

K1-821001-0030  
NHMg M3 6g HSS 800

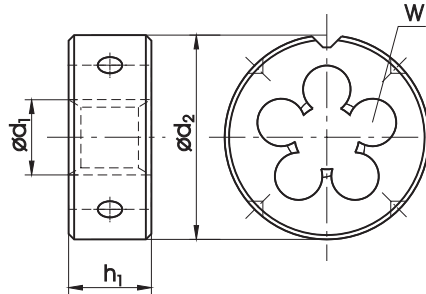
- Dostępne z magazynu, cena w cenniku  
Available from stock, the price in the price list / Ab Lager lieferbar, der Preis in der Preisliste
- Do szybkiej dostawy, cena na zapytanie  
For quick delivery, price on request / Für die schnelle Lieferung, Preis auf Anfrage

**Gwint metryczny drobnozwojny ISO DIN-13**

ISO Metric fine thread DIN-13  
Metrisches ISO-Feingewinde DIN-13



HSS HSSE



**DIN-EN 22 568**



|   |       |       |         |       |       |
|---|-------|-------|---------|-------|-------|
| Nazwa / Name / Bezeichnung                        | 800   | 800   | 800 SPN | INOX  | Ms    |
| Materiał obrabiany / Material / Werkstoff         |       |       |         |       |       |
| Rodzaj materiału / Quality of material / Qualität | HSS   | HSS   | HSS     | HSSE  | HSS   |
| Wykonanie / Execution / Ausführung                |       | LH    |         |       |       |
| Nakrój / Chamfer / Anschnitt                      | 1,75P | 1,75P | 1,75P   | 2,25P | 1,25P |
| Tolerancja / Tolerance / Toleranz                 | 6g    | 6g    | 6g      | 6g    | 6g    |

| MF           | P    | $\varnothing d_2 \times h_1$ | W |       | INDEX | N1-121001 | N1-111001 | N1-141001 | N2-188001 | N1-164001 |
|--------------|------|------------------------------|---|-------|-------|-----------|-----------|-----------|-----------|-----------|
| M 3,5 x 0,5  | 0,5  | 20 x 5                       | 3 | 3,43  | 0037  | o         | o         | o         | o         | o         |
| M 4 x 0,5    | 0,5  | 20 x 5                       | 4 | 3,92  | 0041  | o         | o         | o         | o         | o         |
| M 4,5 x 0,5  | 0,5  | 20 x 5                       | 4 | 4,43  | 0046  | o         | o         | o         | o         | o         |
| M 5 x 0,5    | 0,5  | 20 x 5                       | 4 | 4,92  | 0051  | o         | o         | o         | o         | o         |
| M 5 x 0,75   | 0,75 | 20 x 5                       | 4 | 4,91  | 0052  | o         | o         | o         | o         | o         |
| M 5,5 x 0,5  | 0,5  | 20 x 5                       | 4 | 5,43  | 0056  | o         | o         | o         | o         | o         |
| M 5,5 x 0,75 | 0,75 | 20 x 7                       | 4 | 5,42  | 0057  | o         | o         | o         | o         | o         |
| M 6 x 0,5    | 0,5  | 20 x 7                       | 4 | 5,92  | 0061  | o         | o         | o         | o         | o         |
| M 6 x 0,75   | 0,75 | 20 x 7                       | 4 | 5,90  | 0062  | o         | o         | o         | o         | o         |
| M 7 x 0,75   | 0,75 | 25 x 9                       | 4 | 6,90  | 0072  | o         | o         | o         | o         | o         |
| M 8 x 0,5    | 0,5  | 25 x 9                       | 4 | 7,92  | 0081  | o         | o         | o         | o         | o         |
| M 8 x 0,75   | 0,75 | 25 x 9                       | 4 | 7,90  | 0082  | o         | o         | o         | o         | o         |
| M 8 x 1      | 1    | 25 x 9                       | 4 | 7,88  | 0083  | o         | o         | o         | o         | o         |
| M 9 x 0,75   | 0,75 | 25 x 9                       | 4 | 8,90  | 0092  | o         | o         | o         | o         | o         |
| M 9 x 1      | 1    | 25 x 9                       | 4 | 8,88  | 0093  | o         | o         | o         | o         | o         |
| M 10 x 0,75  | 0,75 | 30 x 11                      | 4 | 9,90  | 0102  | o         | o         | o         | o         | o         |
| M 10 x 1     | 1    | 30 x 11                      | 5 | 9,88  | 0103  | o         | o         | o         | o         | o         |
| M 10 x 1,25  | 1,25 | 30 x 11                      | 4 | 9,86  | 0104  | o         | o         | o         | o         | o         |
| M 11 x 0,75  | 0,75 | 30 x 11                      | 5 | 10,91 | 0112  | o         | o         | o         | o         | o         |
| M 11 x 1     | 1    | 30 x 11                      | 4 | 10,88 | 0113  | o         | o         | o         | o         | o         |
| M 12 x 1     | 1    | 38 x 10                      | 5 | 11,88 | 0123  | o         | o         | o         | o         | o         |
| M 12 x 1,25  | 1,25 | 38 x 10                      | 4 | 11,86 | 0124  | o         | o         | o         | o         | o         |
| M 12 x 1,5   | 1,5  | 38 x 10                      | 4 | 11,85 | 0125  | o         | o         | o         | o         | o         |
| M 14 x 1     | 1    | 38 x 10                      | 5 | 13,88 | 0143  | o         | o         | o         | o         | o         |
| M 14 x 1,5   | 1,5  | 38 x 10                      | 5 | 13,85 | 0145  | o         | o         | o         | o         | o         |
| M 15 x 1     | 1    | 38 x 10                      | 5 | 14,88 | 0153  | o         | o         | o         | o         | o         |
| M 15 x 1,5   | 1,5  | 38 x 10                      | 5 | 14,85 | 0155  | o         | o         | o         | o         | o         |
| M 16 x 1     | 1    | 45 x 14                      | 5 | 15,88 | 0163  | o         | o         | o         | o         | o         |
| M 16 x 1,5   | 1,5  | 45 x 14                      | 5 | 15,85 | 0165  | o         | o         | o         | o         | o         |
| M 17 x 1     | 1    | 45 x 14                      | 5 | 16,88 | 0173  | o         | o         | o         | o         | o         |
| M 17 x 1,5   | 1,5  | 45 x 14                      | 5 | 16,85 | 0175  | o         | o         | o         | o         | o         |
| M 18 x 1     | 1    | 45 x 14                      | 5 | 17,88 | 0183  | o         | o         | o         | o         | o         |
| M 18 x 1,5   | 1,5  | 45 x 14                      | 5 | 17,85 | 0185  | o         | o         | o         | o         | o         |
| M 18 x 2     | 2    | 45 x 14                      | 5 | 17,82 | 0186  | o         | o         | o         | o         | o         |
| M 20 x 1     | 1    | 45 x 14                      | 6 | 19,80 | 0203  | o         | o         | o         | o         | o         |
| M 20 x 1,5   | 1,5  | 45 x 14                      | 6 | 19,85 | 0205  | o         | o         | o         | o         | o         |
| M 20 x 2     | 2    | 45 x 14                      | 6 | 19,82 | 0206  | o         | o         | o         | o         | o         |
| M 22 x 1     | 1    | 55 x 16                      | 6 | 21,88 | 0223  | o         | o         | o         | o         | o         |
| M 22 x 1,5   | 1,5  | 55 x 16                      | 6 | 21,85 | 0225  | o         | o         | o         | o         | o         |
| M 22 x 2     | 2    | 55 x 16                      | 6 | 21,82 | 0226  | o         | o         | o         | o         | o         |
| M 24 x 1     | 1    | 55 x 16                      | 6 | 21,88 | 0243  | o         | o         | o         | o         | o         |
| M 24 x 1,5   | 1,5  | 55 x 16                      | 6 | 23,85 | 0245  | o         | o         | o         | o         | o         |

Przykład zamawiania / Example of order / Beispiel einer Bestellung:

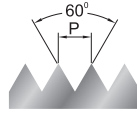
N1-121001-0103  
DIN-EN 22 568 M10x1 6g HSS 800

- Dostępne z magazynu, cena w cenniku  
Available from stock, the price in the price list / Ab Lager lieferbar, der Preis in der Preisliste
- Do szybkiej dostawy, cena na zapytanie  
For quick delivery, price on request / Für die schnelle Lieferung, Preis auf Anfrage

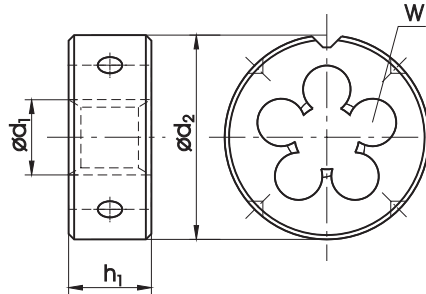


**Gwint metryczny drobnozwojny ISO DIN-13**

ISO Metric fine thread DIN-13  
Metrisches ISO-Feingewinde DIN-13



HSS HSSE



**DIN-EN 22 568**



|   |       |       |         |       |       |
|---|-------|-------|---------|-------|-------|
| Nazwa / Name / Bezeichnung                        | 800   | 800   | 800 SPN | INOX  | Ms    |
| Materiał obrabiany / Material / Werkstoff         |       |       |         |       |       |
| Rodzaj materiału / Quality of material / Qualität | HSS   | HSS   | HSS     | HSSE  | HSS   |
| Wykonanie / Execution / Ausführung                |       | LH    |         |       |       |
| Nakrój / Chamfer / Anschnitt                      | 1,75P | 1,75P | 1,75P   | 2,25P | 1,25P |
| Tolerancja / Tolerance / Toleranz                 | 6g    | 6g    | 6g      | 6g    | 6g    |

3

| MF         | P   | $\varnothing d_2 \times h_1$ | W |       | INDEX | N1-121001 | N1-111001 | N1-141001 | N2-188001 | N1-164001 |
|------------|-----|------------------------------|---|-------|-------|-----------|-----------|-----------|-----------|-----------|
| M 24 x 2   | 2   | 55 x 16                      | 6 | 23,82 | 0246  | ●         | ●         | ○         | ○         | ○         |
| M 25 x 1   | 1   | 55 x 16                      | 6 | 24,88 | 0253  | ●         | ○         | ○         | ○         | ○         |
| M 25 x 1,5 | 1,5 | 55 x 16                      | 6 | 24,85 | 0255  | ●         | ○         | ○         | ○         | ○         |
| M 25 x 2   | 2   | 55 x 16                      | 6 | 24,82 | 0256  | ●         | ○         | ○         | ○         | ○         |
| M 26 x 1,5 | 1,5 | 55 x 16                      | 6 | 25,85 | 0265  | ●         | ○         | ○         | ○         | ○         |
| M 27 x 1   | 1   | 65 x 18                      | 6 | 26,88 | 0273  | ●         | ○         | ○         | ○         | ○         |
| M 27 x 1,5 | 1,5 | 65 x 18                      | 6 | 26,85 | 0275  | ●         | ○         | ○         | ○         | ○         |
| M 27 x 2   | 2   | 65 x 18                      | 6 | 26,82 | 0276  | ●         | ○         | ○         | ○         | ○         |
| M 28 x 1   | 1   | 65 x 18                      | 6 | 27,88 | 0283  | ●         | ○         | ○         | ○         | ○         |
| M 28 x 1,5 | 1,5 | 65 x 18                      | 6 | 27,85 | 0285  | ●         | ○         | ○         | ○         | ○         |
| M 28 x 2   | 2   | 65 x 18                      | 6 | 27,82 | 0286  | ●         | ○         | ○         | ○         | ○         |
| M 30 x 1   | 1   | 65 x 18                      | 6 | 29,88 | 0303  | ●         | ○         | ○         | ○         | ○         |
| M 30 x 1,5 | 1,5 | 65 x 18                      | 6 | 29,85 | 0305  | ●         | ○         | ○         | ○         | ○         |
| M 30 x 2   | 2   | 65 x 18                      | 6 | 29,82 | 0306  | ●         | ○         | ○         | ○         | ○         |
| M 30 x 3   | 3   | 65 x 18                      | 6 | 29,76 | 0307  | ●         | ○         | ○         | ○         | ○         |
| M 32 x 1,5 | 1,5 | 65 x 18                      | 7 | 31,85 | 0325  | ●         | ○         | ○         | ○         | ○         |
| M 32 x 2   | 2   | 65 x 18                      | 7 | 31,82 | 0326  | ●         | ○         | ○         | ○         | ○         |
| M 33 x 1,5 | 1,5 | 65 x 18                      | 7 | 32,85 | 0335  | ●         | ○         | ○         | ○         | ○         |
| M 33 x 2   | 2   | 65 x 18                      | 7 | 32,82 | 0336  | ●         | ○         | ○         | ○         | ○         |
| M 33 x 3   | 3   | 65 x 18                      | 7 | 32,76 | 0337  | ●         | ○         | ○         | ○         | ○         |
| M 35 x 1,5 | 1,5 | 65 x 18                      | 7 | 34,85 | 0355  | ●         | ○         | ○         | ○         | ○         |
| M 36 x 1,5 | 1,5 | 65 x 18                      | 7 | 35,85 | 0365  | ●         | ○         | ○         | ○         | ○         |
| M 36 x 2   | 2   | 65 x 18                      | 7 | 35,82 | 0366  | ●         | ○         | ○         | ○         | ○         |
| M 36 x 3   | 3   | 65 x 25                      | 7 | 35,76 | 0367  | ●         | ○         | ○         | ○         | ○         |
| M 38 x 1,5 | 1,5 | 75 x 20                      | 7 | 37,85 | 0385  | ●         | ○         | ○         | ○         | ○         |
| M 39 x 1,5 | 1,5 | 75 x 20                      | 7 | 38,85 | 0395  | ●         | ○         | ○         | ○         | ○         |
| M 39 x 2   | 2   | 75 x 20                      | 7 | 38,82 | 0396  | ●         | ○         | ○         | ○         | ○         |
| M 39 x 3   | 3   | 75 x 30                      | 7 | 38,76 | 0397  | ●         | ○         | ○         | ○         | ○         |
| M 40 x 1,5 | 1,5 | 75 x 20                      | 7 | 39,85 | 0405  | ●         | ○         | ○         | ○         | ○         |
| M 40 x 2   | 2   | 75 x 20                      | 7 | 39,82 | 0406  | ●         | ○         | ○         | ○         | ○         |
| M 40 x 3   | 3   | 75 x 30                      | 7 | 39,76 | 0407  | ●         | ○         | ○         | ○         | ○         |
| M 42 x 1,5 | 1,5 | 75 x 20                      | 8 | 41,85 | 0425  | ●         | ○         | ○         | ○         | ○         |
| M 42 x 2   | 2   | 75 x 20                      | 8 | 41,82 | 0426  | ●         | ○         | ○         | ○         | ○         |
| M 42 x 3   | 3   | 75 x 30                      | 7 | 41,76 | 0427  | ●         | ○         | ○         | ○         | ○         |
| M 45 x 1,5 | 1,5 | 90 x 22                      | 7 | 44,85 | 0455  | ●         | ○         | ○         | ○         | ○         |
| M 45 x 2   | 2   | 90 x 22                      | 7 | 44,82 | 0456  | ●         | ○         | ○         | ○         | ○         |
| M 45 x 3   | 3   | 90 x 36                      | 7 | 44,76 | 0457  | ●         | ○         | ○         | ○         | ○         |
| M 48 x 1,5 | 1,5 | 90 x 22                      | 7 | 47,85 | 0485  | ●         | ○         | ○         | ○         | ○         |
| M 48 x 2   | 2   | 90 x 22                      | 7 | 47,82 | 0486  | ●         | ○         | ○         | ○         | ○         |
| M 48 x 3   | 3   | 90 x 36                      | 7 | 47,76 | 0487  | ●         | ○         | ○         | ○         | ○         |
| M 48 x 4   | 4   | 90 x 36                      | 7 | 47,73 | 0488  | ●         | ○         | ○         | ○         | ○         |
| M 50 x 1,5 | 1,5 | 90 x 22                      | 8 | 49,85 | 0505  | ●         | ○         | ○         | ○         | ○         |

Przykład zamawiania / Example of order / Beispiel einer Bestellung:

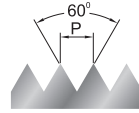
N1-121001-0306  
DIN-EN 22 568 M30x2 6g HSS 800

- Dostępne z magazynu, cena w cenniku  
Available from stock, the price in the price list / Ab Lager lieferbar, der Preis in der Preisliste
- Do szybkiej dostawy, cena na zapytanie  
For quick delivery, price on request / Für die schnelle Lieferung, Preis auf Anfrage

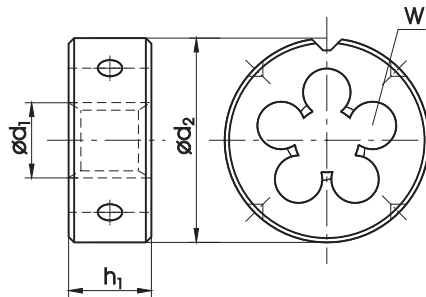


**Gwint metryczny drobnozwojny ISO DIN-13**

ISO Metric fine thread DIN-13  
Metrisches ISO-Feingewinde DIN-13



HSS HSSE



**DIN-EN 22 568**



|  |       |       |         |       |       |
|--|-------|-------|---------|-------|-------|
| <b>Nazwa / Name / Bezeichnung</b>                        | 800   | 800   | 800 SPN | INOX  | Ms    |
| <b>Materiał obrabiany / Material / Werkstoff</b>         |       |       |         |       |       |
| <b>Rodzaj materiału / Quality of material / Qualität</b> | HSS   | HSS   | HSS     | HSSE  | HSS   |
| <b>Wykonanie / Execution / Ausführung</b>                |       | LH    |         |       |       |
| <b>Nakrój / Chamfer / Anschnitt</b>                      | 1,75P | 1,75P | 1,75P   | 2,25P | 1,25P |
| <b>Tolerancja / Tolerance / Toleranz</b>                 | 6g    | 6g    | 6g      | 6g    | 6g    |

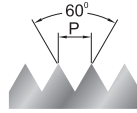
| MF<br>$\varnothing d_1$ | P   | $\varnothing d_2 \times h_1$ | W |       | INDEX | N1-121001 | N1-111001 | N1-141001 | N2-188001 | N1-164001 |
|-------------------------|-----|------------------------------|---|-------|-------|-----------|-----------|-----------|-----------|-----------|
| M 50 x 2                | 2   | 90 x 22                      | 8 | 49,82 | 0506  | ●         | ○         | ○         | ○         | ○         |
| M 50 x 3                | 3   | 90 x 36                      | 8 | 49,76 | 0507  | ●         | ○         | ○         | ○         | ○         |
| M 52 x 1,5              | 1,5 | 90 x 36                      | 8 | 51,85 | 0525  | ●         | ○         | ○         | ○         | ○         |
| M 52 x 2                | 2   | 90 x 22                      | 8 | 51,82 | 0526  | ●         | ○         | ○         | ○         | ○         |
| M 52 x 3                | 3   | 90 x 36                      | 8 | 51,76 | 0527  | ●         | ○         | ○         | ○         | ○         |
| M 52 x 4                | 4   | 90 x 36                      | 8 | 51,73 | 0528  | ●         | ○         | ○         | ○         | ○         |
| M 55 x 1,5              | 1,5 | 105 x 22                     | 8 | 54,85 | 0555  | ○         | ○         | ○         | ○         | ○         |
| M 55 x 2                | 2   | 105 x 22                     | 7 | 54,82 | 0556  | ○         | ○         | ○         | ○         | ○         |
| M 55 x 3                | 3   | 105 x 36                     | 7 | 54,76 | 0557  | ○         | ○         | ○         | ○         | ○         |
| M 55 x 4                | 4   | 105 x 36                     | 7 | 54,73 | 0558  | ○         | ○         | ○         | ○         | ○         |
| M 56 x 1,5              | 1,5 | 105 x 22                     | 8 | 55,85 | 0565  | ○         | ○         | ○         | ○         | ○         |
| M 56 x 2                | 2   | 105 x 22                     | 8 | 55,82 | 0566  | ○         | ○         | ○         | ○         | ○         |
| M 56 x 3                | 3   | 105 x 36                     | 8 | 55,76 | 0567  | ○         | ○         | ○         | ○         | ○         |
| M 56 x 4                | 4   | 105 x 36                     | 7 | 55,73 | 0568  | ○         | ○         | ○         | ○         | ○         |

Przykład zamawiania / Example of order / Beispiel einer Bestellung:

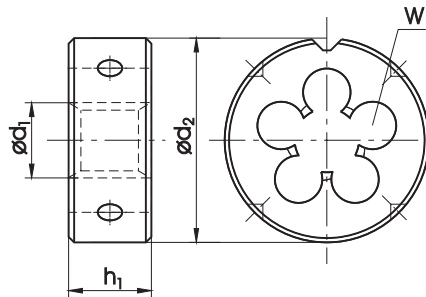
N1-121001-0506  
DIN-EN 22 568 M50x2 6g HSS 800

- Dostępne z magazynu, cena w cenniku  
Available from stock, the price in the price list / Ab Lager lieferbar, der Preis in der Preisliste
- Do szybkiej dostawy, cena na zapytanie  
For quick delivery, price on request / Für die schnelle Lieferung, Preis auf Anfrage

**Gwint metryczny drobnozwojny ISO DIN-13**


 ISO Metric fine thread DIN-13  
 Metrisches ISO-Feingewinde DIN-13


HSS



~DIN-EN 22 568



| Nazwa / Name / Bezeichnung                        |      | 800                          | 800   |   |       |           |           |
|---|------|------------------------------|-------|---|-------|-----------|-----------|
| Materiał obrabiany / Material / Werkstoff         |      |                              |       |   |       |           |           |
| Rodzaj materiału / Quality of material / Qualität |      | HSS                          | HSS   |   |       |           |           |
| Wykonanie / Execution / Ausführung                |      | D25                          | D38   |   |       |           |           |
| Nakrój / Chamfer / Anschnitt                      |      | 1,75P                        | 1,75P |   |       |           |           |
| Tolerancja / Tolerance / Toleranz                 |      | 6g                           | 6g    |   |       |           |           |
| MF<br>$\varnothing d_1$                           | P    | $\varnothing d_2 \times h_1$ | W     |  | INDEX | N1-121251 | N1-121381 |
| M 8 x 1*  | 1    | 25 x 9                       | 4     | 7,88  | 0083* |           |           |
| M 10 x 1  | 1    | 25 x 9                       | 5     | 9,88  | 0103  | ●         |           |
| M 10 x 1,25                                       | 1,25 | 25 x 9                       | 5     | 9,86  | 0104  | ●         |           |
| M 12 x 1,25                                       | 1,25 | 25 x 9                       | 6     | 11,86   | 0124  | ●         |           |
| M 12 x 1,5  | 1,5  | 25 x 9                       | 6     | 11,85   | 0125  | ●         |           |
| M 16 x 1,5  | 1,5  | 38 x 14                      | 6     | 15,85   | 0165  |           | ●         |
| M 18 x 1,5  | 1,5  | 38 x 14                      | 6     | 17,85   | 0185  |           | ●         |

**\* Gabaryty standardowe dostępne pod indeksem N1-121001**

 \* standard overall dimensions available with catalogue number N1-121001  
 \* Standardabmessungen sind unter dem Index N1-121001 erhältlich

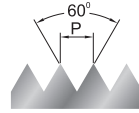

Przykład zamawiania / Example of order / Beispiel einer Bestellung:

 N1-121251-0103  
 DIN-EN 22 568 M10x1 6g HSS 800 D25

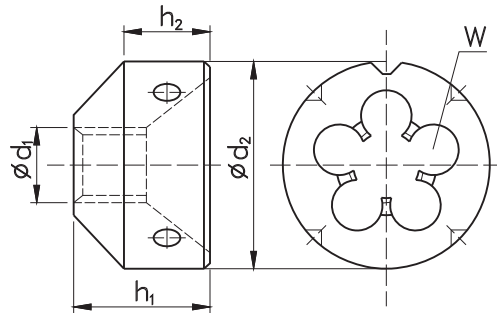
- Dostępne z magazynu, cena w cenniku  
Available from stock, the price in the price list / Ab Lager lieferbar, der Preis in der Preisliste
- Do szybkiej dostawy, cena na zapytanie  
For quick delivery, price on request / Für die schnelle Lieferung, Preis auf Anfrage

**Gwint metryczny drobnozwojny ISO DIN-13**

ISO Metric fine thread DIN-13  
Metrisches ISO-Feingewinde DIN-13



HSS



**NHMg**



| <b>Nazwa / Name / Bezeichnung</b>                        | 800   | Ms              |                |                |   |       |       |           |           |
|--|-------|-----------------|----------------|----------------|---|-------|-------|-----------|-----------|
| <b>Materiał obrabiany / Material / Werkstoff</b>         |       |                 |                |                |   |       |       |           |           |
| <b>Rodzaj materiału / Quality of material / Qualität</b> | HSS   | HSS             |                |                |   |       |       |           |           |
| <b>Wykonanie / Execution / Ausführung</b>                |       |                 |                |                |   |       |       |           |           |
| <b>Nakrój / Chamfer / Anschnitt</b>                      | 1,75P | 1,25P           |                |                |   |       |       |           |           |
| <b>Tolerancja / Tolerance / Toleranz</b>                 | 6g    | 6g              |                |                |   |       |       |           |           |
| MF<br>Ød <sub>1</sub>                                    | P     | Ød <sub>2</sub> | h <sub>1</sub> | h <sub>2</sub> | W |       | INDEX | K1-821001 | K1-864001 |
| M 8 x 1  | 1     | 25              | 15             | 9              | 4 | 7,88  | 0083  | o         | o         |
| M 10 x 1   | 1     | 25              | 15             | 9              | 5 | 9,88  | 0103  | o         | o         |
| M 12 x 1   | 1     | 30              | 18             | 11             | 6 | 11,88 | 0123  | o         | o         |
| M 14 x 1   | 1     | 30              | 18             | 11             | 6 | 13,88 | 0143  | o         | o         |
| M 14 x 1,5   | 1,5   | 30              | 18             | 11             | 6 | 13,85 | 0145  | o         | o         |
| M 16 x 1,5   | 1,5   | 38              | 22             | 14             | 6 | 15,85 | 0165  | o         | o         |
| M 18 x 1,5   | 1,5   | 38              | 22             | 14             | 6 | 17,85 | 0185  | o         | o         |
| M 20 x 1,5   | 1,5   | 38              | 22             | 14             | 7 | 19,85 | 0205  | o         | o         |
| M 22 x 1,5   | 1,5   | 45              | 28             | 18             | 6 | 21,85 | 0225  | o         | o         |
| M 24 x 1,5   | 1,5   | 45              | 28             | 18             | 8 | 23,85 | 0245  | o         | o         |

3

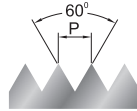
Przykład zamawiania / Example of order / Beispiel einer Bestellung:

K1-821001-0103  
NHMg M10x1 6g HSS 800

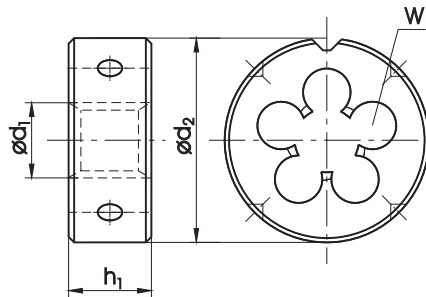
- Dostępne z magazynu, cena w cenniku  
Available from stock, the price in the price list / Ab Lager lieferbar, der Preis in der Preisliste
- Do szybkiej dostawy, cena na zapytanie  
For quick delivery, price on request / Für die schnelle Lieferung, Preis auf Anfrage

**Gwint amerykański zunifikowany UNC, ANSI B-1.1**

American unified coarse thread UNC, ANSI B-1.1  
Amerikanisches Unified - Grobgewinde UNC, ANSI B-1.1



HSS



**DIN-EN 22 568**



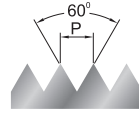
3

|  |       |       |  |  |  |
|--|-------|-------|--|--|--|
| <b>Nazwa / Name / Bezeichnung</b>                        | 800   | 800   |  |  |  |
| <b>Materiał obrabiany / Material / Werkstoff</b>         |       |       |  |  |  |
| <b>Rodzaj materiału / Quality of material / Qualität</b> | HSS   | HSS   |  |  |  |
| <b>Wykonanie / Execution / Ausführung</b>                |       | LH    |  |  |  |
| <b>Nakrój / Chamfer / Anschnitt</b>                      | 1,75P | 1,75P |  |  |  |
| <b>Tolerancja / Tolerance / Toleranz</b>                 | 2A    | 2A    |  |  |  |

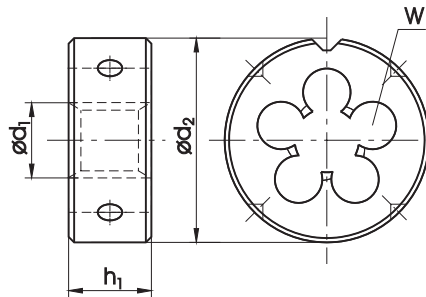
| UNC        | $\varnothing d_1$ | 1"/P  | P     | $\varnothing d_2 \times h_1$ | W |       | INDEX | N1-121001 | N1-111001 |
|------------|-------------------|-------|-------|------------------------------|---|-------|-------|-----------|-----------|
| No 5 - 40  | 3,175             | 40    | 0,635 | 20 x 5                       | 3 | 3,09  | 4105  | ●         | ○         |
| No 6 - 32  | 3,505             | 32    | 0,794 | 20 x 5                       | 3 | 3,41  | 4106  | ●         | ○         |
| No 8 - 32  | 4,166             | 32    | 0,794 | 20 x 7                       | 3 | 4,07  | 4108  | ●         | ○         |
| No 10 - 24 | 4,826             | 24    | 1,058 | 20 x 7                       | 3 | 4,71  | 4110  | ●         | ○         |
| No 12 - 24 | 5,486             | 24    | 1,058 | 20 x 7                       | 4 | 5,37  | 4112  | ●         | ○         |
| 1/4 - 20   | 6,350             | 20    | 1,270 | 20 x 7                       | 4 | 6,22  | 4127  | ●         | ○         |
| 5/16 - 18  | 7,938             | 18    | 1,411 | 25 x 9                       | 4 | 7,80  | 4128  | ●         | ○         |
| 3/8 - 16   | 9,525             | 16    | 1,588 | 30 x 11                      | 4 | 9,37  | 4129  | ●         | ○         |
| 7/16 - 14  | 11,112            | 14    | 1,814 | 30 x 11                      | 4 | 10,95 | 4130  | ●         | ○         |
| 1/2 - 13   | 12,700            | 13    | 1,954 | 38 x 14                      | 4 | 12,52 | 4131  | ●         | ○         |
| 9/16 - 12  | 14,288            | 12    | 2,117 | 38 x 14                      | 4 | 14,10 | 4132  | ●         | ○         |
| 5/8 - 11   | 15,875            | 11    | 2,309 | 45 x 18                      | 5 | 15,68 | 4133  | ●         | ○         |
| 3/4 - 10   | 19,050            | 10    | 2,504 | 45 x 18                      | 5 | 18,84 | 4135  | ●         | ○         |
| 7/8 - 9    | 22,225            | 9     | 2,822 | 55 x 22                      | 5 | 22,00 | 4137  | ●         | ○         |
| 1 - 8      | 25,400            | 8     | 3,175 | 55 x 22                      | 5 | 25,16 | 4139  | ●         | ○         |
| 1.1/8 - 7  | 28,575            | 7     | 3,629 | 65 x 25                      | 5 | 28,31 | 4141  | ○         | ○         |
| 1.1/4 - 7  | 31,750            | 7     | 3,629 | 65 x 25                      | 6 | 31,49 | 4143  | ○         | ○         |
| 1.3/8 - 6  | 34,925            | 6     | 4,233 | 65 x 25                      | 7 | 34,63 | 4145  | ○         | ○         |
| 1.1/2 - 6  | 38,100            | 6     | 4,233 | 75 x 30                      | 6 | 37,80 | 4147  | ○         | ○         |
| 1.3/4 - 5  | 44,450            | 5     | 5,080 | 90 x 36                      | 6 | 44,12 | 4151  | ○         | ○         |
| 2 - 4.1/2  | 50,800            | 4.1/2 | 5,645 | 90 x 36                      | 7 | 50,45 | 4155  | ○         | ○         |

**Gwint amerykański zunifikowany  
drobnozwojny UNF, ANSI B-1.1**

American unified fine thread UNF, ANSI B-1.1  
Amerikanisches Unified - Feingewinde UNF, ANSI B-1.1



HSS



**DIN-EN 22 568**



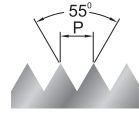
|  |       |       |  |  |  |
|--|-------|-------|--|--|--|
| <b>Nazwa / Name / Bezeichnung</b>                        | 800   | 800   |  |  |  |
| <b>Materiał obrabiany / Material / Werkstoff</b>         |       |       |  |  |  |
| <b>Rodzaj materiału / Quality of material / Qualität</b> | HSS   | HSS   |  |  |  |
| <b>Wykonanie / Execution / Ausführung</b>                |       | LH    |  |  |  |
| <b>Nakrój / Chamfer / Anschnitt</b>                      | 1,75P | 1,75P |  |  |  |
| <b>Tolerancja / Tolerance / Toleranz</b>                 | 2A    | 2A    |  |  |  |

| UNF        | $\varnothing d_1$ | 1"/P | P     | $\varnothing d_2 \times h_1$ | W |       | INDEX | N1-121001 | N1-111001 |
|------------|-------------------|------|-------|------------------------------|---|-------|-------|-----------|-----------|
| No 5 - 44  | 3,175             | 44   | 0,577 | 20 x 5                       | 3 | 3,10  | 4205  | ●         | ○         |
| No 6 - 40  | 3,505             | 40   | 0,635 | 20 x 5                       | 3 | 3,42  | 4206  | ●         | ○         |
| No 8 - 36  | 4,166             | 36   | 0,705 | 20 x 7                       | 3 | 4,08  | 4208  | ●         | ○         |
| No 10 - 32 | 4,826             | 32   | 0,794 | 20 x 7                       | 3 | 4,73  | 4210  | ●         | ○         |
| No 12 - 28 | 5,486             | 28   | 0,907 | 20 x 7                       | 4 | 5,38  | 4212  | ●         | ○         |
| 1/4 - 28   | 6,350             | 28   | 0,907 | 20 x 7                       | 4 | 6,24  | 4227  | ●         | ○         |
| 5/16 - 24  | 7,938             | 24   | 1,058 | 25 x 9                       | 5 | 7,82  | 4228  | ●         | ○         |
| 3/8 - 24   | 9,525             | 24   | 1,058 | 30 x 11                      | 4 | 9,41  | 4229  | ●         | ○         |
| 7/16 - 20  | 11,112            | 20   | 1,270 | 30 x 11                      | 5 | 10,98 | 4230  | ●         | ○         |
| 1/2 - 20   | 12,700            | 20   | 1,270 | 38 x 10                      | 5 | 12,56 | 4231  | ●         | ○         |
| 9/16 - 18  | 14,288            | 18   | 1,411 | 38 x 10                      | 5 | 14,14 | 4232  | ●         | ○         |
| 5/8 - 18   | 15,875            | 18   | 1,411 | 45 x 14                      | 5 | 15,73 | 4233  | ●         | ○         |
| 3/4 - 16   | 19,050            | 16   | 1,588 | 45 x 14                      | 6 | 18,89 | 4235  | ●         | ○         |
| 7/8 - 14   | 22,225            | 14   | 1,814 | 55 x 16                      | 5 | 22,05 | 4237  | ●         | ○         |
| 1 - 12     | 25,400            | 12   | 2,117 | 55 x 16                      | 6 | 25,21 | 4239  | ●         | ○         |
| 1.1/8 - 12 | 28,575            | 12   | 2,117 | 65 x 18                      | 6 | 28,38 | 4241  | ○         | ○         |
| 1.1/4 - 12 | 31,750            | 12   | 2,117 | 65 x 18                      | 6 | 31,55 | 4243  | ○         | ○         |
| 1.3/8 - 12 | 34,925            | 12   | 2,117 | 65 x 18                      | 7 | 34,73 | 4245  | ○         | ○         |
| 1.1/2 - 12 | 38,100            | 12   | 2,117 | 75 x 20                      | 8 | 37,90 | 4247  | ○         | ○         |

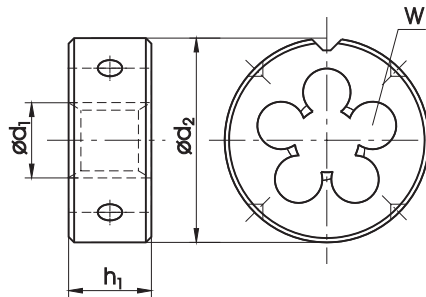
Przykład zamawiania / Example of order / Beispiel einer Bestellung:

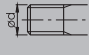
N1-121001-4239  
DIN-EN 22 568 1-12 UNF 2A HSS 800

- Dostępne z magazynu, cena w cenniku  
Available from stock, the price in the price list / Ab Lager lieferbar, der Preis in der Preisliste
- Do szybkiej dostawy, cena na zapytanie  
For quick delivery, price on request / Für die schnelle Lieferung, Preis auf Anfrage

**Gwint rurowy walcowy G, DIN-ISO 228**Whitworth pipe thread G, DIN-ISO 228  
Whitworth Rohrgewinde G, DIN-ISO 228

HSS HSSE

**DIN-EN 24 231**

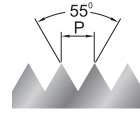
| Nazwa / Name / Bezeichnung                        |                   |      |       |                              |   |   | 800   | 800       | INOX      | Ms        |           |
|---|-------------------|------|-------|------------------------------|---|---|-------|-----------|-----------|-----------|-----------|
| Materiał obrabiany / Material / Werkstoff         |                   |      |       |                              |   |   |       |           |           |           |           |
| Rodzaj materiału / Quality of material / Qualität |                   |      |       |                              |   |   | HSS   | HSS       | HSSE      | HSS       |           |
| Wykonanie / Execution / Ausführung                |                   |      |       |                              |   |   |       | LH        |           |           |           |
| Nakrój / Chamfer / Anschnitt                      |                   |      |       |                              |   |   | 1,75P | 1,75P     | 2,25P     | 1,25P     |           |
| Tolerancja / Tolerance / Toleranz                 |                   |      |       |                              |   |   | A     | A         | A         | A         |           |
| G   | $\varnothing d_1$ | 1"/P | P     | $\varnothing d_2 \times h_1$ | W |  | INDEX | N1-121001 | N1-111001 | N2-188001 | N1-164001 |
| G-1/8"  | 9,73              | 28   | 0,907 | 30 x 11                      | 4 | 9,62  | 3123  | ●         | ○         | ●         | ●         |
| G-1/4"  | 13,16             | 19   | 1,337 | 38 x 10                      | 4 | 13,03   | 3127  | ●         | ●         | ●         | ●         |
| G-3/8"  | 16,66             | 19   | 1,337 | 45 x 14                      | 5 | 16,54   | 3129  | ●         | ●         | ●         | ●         |
| G-1/2"  | 20,96             | 14   | 1,814 | 45 x 14                      | 6 | 20,81   | 3131  | ●         | ●         | ●         | ●         |
| G-5/8"  | 22,91             | 14   | 1,814 | 55 x 16                      | 5 | 22,77   | 3133  | ●         | ○         | ○         | ○         |
| G-3/4"  | 26,44             | 14   | 1,814 | 55 x 16                      | 6 | 26,30   | 3135  | ●         | ●         | ●         | ●         |
| G-7/8"  | 30,20             | 14   | 1,814 | 65 x 18                      | 6 | 30,06   | 3137  | ●         | ○         | ○         | ○         |
| G-1"  | 33,25             | 11   | 2,309 | 65 x 18                      | 7 | 33,07   | 3139  | ●         | ○         | ●         | ●         |
| G-1.1/8"  | 37,90             | 11   | 2,309 | 75 x 20                      | 7 | 37,72   | 3141  | ○         | ○         | ○         | ○         |
| G-1.1/4"  | 41,91             | 11   | 2,309 | 75 x 20                      | 8 | 41,73   | 3143  | ●         | ○         | ○         | ○         |
| G-1.3/8"  | 44,32             | 11   | 2,309 | 90 x 22                      | 7 | 44,14   | 3145  | ○         | ○         | ○         | ○         |
| G-1.1/2"  | 47,80             | 11   | 2,309 | 90 x 22                      | 7 | 47,62   | 3147  | ●         | ○         | ○         | ○         |
| G-1.3/4"  | 53,75             | 11   | 2,309 | 105 x 22                     | 8 | 53,57   | 3151  | ○         | ○         | ○         | ○         |
| G-2"  | 59,61             | 11   | 2,309 | 105 x 22                     | 8 | 59,43   | 3155  | ○         | ○         | ○         | ○         |
| G-2.1/4"  | 65,71             | 11   | 2,309 | 120 x 22                     | 8 | 65,49   | 3157  | ○         | ○         | ○         | ○         |

Przykład zamawiania / Example of order / Beispiel einer Bestellung:

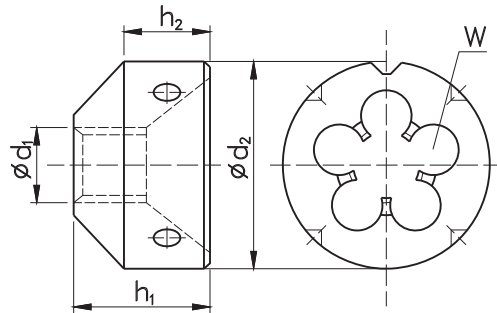
N1-164001-3129  
DIN-EN 24 231 G-3/8" A HSS Ms

- Dostępne z magazynu, cena w cenniku  
Available from stock, the price in the price list / Ab Lager lieferbar, der Preis in der Preisliste
- Do szybkiej dostawy, cena na zapytanie  
For quick delivery, price on request / Für die schnelle Lieferung, Preis auf Anfrage

**Gwint rurowy walcowy G, DIN-ISO 228**

 Whitworth pipe thread G, DIN-ISO 228  
 Whitworth Rohrgewinde G, DIN-ISO 228


HSS


**NHMg**


| Nazwa / Name / Bezeichnung                        |                 | 800   | Ms    |                 |                |                |   |       |       |           |           |  |  |
|---|-----------------|-------|-------|-----------------|----------------|----------------|---|-------|-------|-----------|-----------|--|--|
| Materiał obrabiany / Material / Werkstoff         |                 |       |       |                 |                |                |   |       |       |           |           |  |  |
| Rodzaj materiału / Quality of material / Qualität |                 | HSS   | HSS   |                 |                |                |   |       |       |           |           |  |  |
| Wykonanie / Execution / Ausführung                |                 |       |       |                 |                |                |   |       |       |           |           |  |  |
| Nakrój / Chamfer / Anschnitt                      |                 | 1,75P | 1,25P |                 |                |                |   |       |       |           |           |  |  |
| Tolerancja / Tolerance / Toleranz                 |                 | A     | A     |                 |                |                |   |       |       |           |           |  |  |
| G   | Ød <sub>1</sub> | 1"/P  | P     | Ød <sub>2</sub> | h <sub>1</sub> | h <sub>2</sub> | W |       | INDEX | K1-821001 | K1-864001 |  |  |
| G-1/8"  | 9,73            | 28    | 0,907 | 30              | 18             | 11             | 5 | 9,62  | 3123  | ○         | ●         |  |  |
| G-1/4"  | 13,16           | 19    | 1,337 | 38              | 18             | 10             | 5 | 13,03 | 3127  | ○         | ●         |  |  |
| G-3/8"  | 16,66           | 19    | 1,337 | 45              | 18             | 10             | 5 | 16,54 | 3129  | ○         | ●         |  |  |
| G-1/2"  | 20,96           | 14    | 1,814 | 45              | 23             | 14             | 6 | 20,81 | 3131  | ○         | ●         |  |  |
| G-5/8"  | 22,91           | 14    | 1,814 | 55              | 27             | 16             | 5 | 22,77 | 3133  | ○         | ○         |  |  |
| G-3/4"  | 26,44           | 14    | 1,814 | 55              | 27             | 16             | 6 | 26,30 | 3135  | ○         | ●         |  |  |

Przykład zamawiania / Example of order / Beispiel einer Bestellung:

 K1-864001-3131  
 NHMg G-1/2" A HSS Ms

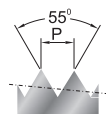
- Dostępne z magazynu, cena w cenniku  
Available from stock, the price in the price list / Ab Lager lieferbar, der Preis in der Preisliste
- Do szybkiej dostawy, cena na zapytanie  
For quick delivery, price on request / Für die schnelle Lieferung, Preis auf Anfrage



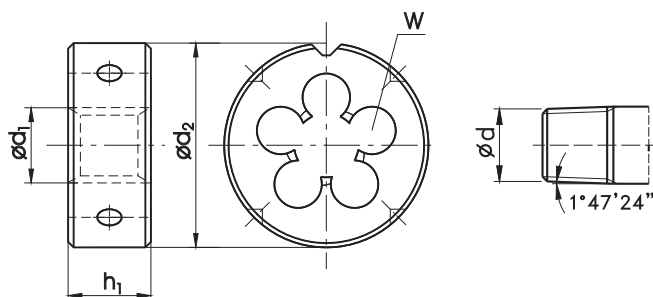
**Gwint rurowy stożkowy R, ISO-7/1**

Whitworth pipe external thread R, ISO-7/1

Kegelliges Whitworth-Rohr-Außengewinde R, ISO-7/1



HSS

**DIN-EN 24 230**

Nazwa / Name / Bezeichnung

800

Materiał obrabiany / Material / Werkstoff

Rodzaj materiału / Quality of material / Qualität

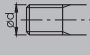
HSS

Wykonanie / Execution / Ausführung

Nakrój / Chamfer / Anschnitt

2P

Tolerancja / Tolerance / Toleranz

| R      | $\varnothing d_1$ | 1"/P | P     | $\varnothing d_2 \times h_1$ | W |  | INDEX | N1-121001 |  |  |  |  |
|--------|-------------------|------|-------|------------------------------|---|---|-------|-----------|--|--|--|--|
| R-1/8" | 9,73              | 28   | 0,907 | 30 x 11                      | 5 | 9,48  | 3423  | ●         |  |  |  |  |
| R-1/4" | 13,16             | 19   | 1,337 | 38 x 14                      | 5 | 12,78   | 3427  | ●         |  |  |  |  |
| R-3/8" | 16,16             | 19   | 1,337 | 45 x 18                      | 5 | 16,26   | 3429  | ●         |  |  |  |  |
| R-1/2" | 20,96             | 14   | 1,814 | 55 x 22                      | 5 | 20,44   | 3431  | ●         |  |  |  |  |
| R-3/4" | 26,44             | 14   | 1,814 | 55 x 22                      | 6 | 25,85   | 3435  | ●         |  |  |  |  |
| R-1"   | 32,25             | 11   | 2,309 | 65 x 25                      | 7 | 32,60   | 3439  | ●         |  |  |  |  |

Przykład zamawiania / Example of order / Beispiel einer Bestellung:

N1-121001-3427

DIN-EN 24 230 R-1/4" HSS 800

● Dostępne z magazynu, cena w cenniku

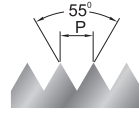
Available from stock, the price in the price list / Ab Lager lieferbar, der Preis in der Preisliste

○ Do szybkiej dostawy, cena na zapytanie

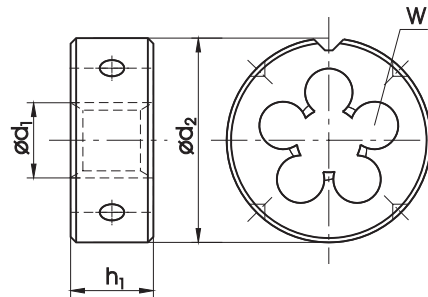
For quick delivery, price on request / Für die schnelle Lieferung, Preis auf Anfrage

**Gwint calowy zwykły Whitwortha BSW, BS-84:1956**

Whitworth thread BSW, BS-84:1956  
Whitworth-Gewinde BSW, BS-84:1956

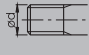


HSS



**DIN-EN 22 568**



| Nazwa / Name / Bezeichnung                        |                   |      |       |                              |   |   | 800          | 800          |           |  |  |  |
|---|-------------------|------|-------|------------------------------|---|---|--------------|--------------|-----------|--|--|--|
| Materiał obrabiany / Material / Werkstoff         |                   |      |       |                              |   |   |              |              |           |  |  |  |
| Rodzaj materiału / Quality of material / Qualität |                   |      |       |                              |   |   | HSS          | HSS          |           |  |  |  |
| Wykonanie / Execution / Ausführung                |                   |      |       |                              |   |   |              | LH           |           |  |  |  |
| Nakrój / Chamfer / Anschnitt                      |                   |      |       |                              |   |   | 1,75P        | 1,75P        |           |  |  |  |
| Tolerancja / Tolerance / Toleranz                 |                   |      |       |                              |   |   | medium class | medium class |           |  |  |  |
| BSW   | $\varnothing d_1$ | 1"/P | P     | $\varnothing d_2 \times h_1$ | W |  | INDEX        | N1-121001    | N1-111001 |  |  |  |
| 1/8 - 40  | 3,18              | 40   | 0,635 | 20 x 5                       | 3 | 3,09  | 7123         | ●            | ○         |  |  |  |
| 3/16 - 24   | 4,76              | 24   | 1,058 | 20 x 7                       | 4 | 4,66  | 7125         | ●            | ○         |  |  |  |
| 1/4 - 20  | 6,35              | 20   | 1,270 | 20 x 7                       | 4 | 6,24  | 7127         | ●            | ○         |  |  |  |
| 5/16 - 18   | 7,94              | 18   | 1,411 | 25 x 9                       | 4 | 7,82  | 7128         | ●            | ○         |  |  |  |
| 3/8 - 16  | 9,53              | 16   | 1,588 | 30 x 11                      | 4 | 9,40  | 7129         | ●            | ○         |  |  |  |
| 7/16 - 14   | 11,11             | 14   | 1,814 | 30 x 11                      | 4 | 10,98   | 7130         | ●            | ○         |  |  |  |
| 1/2 - 12  | 12,70             | 12   | 2,117 | 38 x 14                      | 4 | 12,56   | 7131         | ●            | ○         |  |  |  |
| 9/16 - 12   | 14,29             | 12   | 2,117 | 38 x 14                      | 4 | 14,14   | 7132         | ●            | ○         |  |  |  |
| 5/8 - 11  | 15,88             | 11   | 2,309 | 45 x 18                      | 5 | 15,72   | 7133         | ●            | ○         |  |  |  |
| 3/4 - 10  | 19,05             | 10   | 2,504 | 45 x 18                      | 5 | 18,89   | 7135         | ●            | ○         |  |  |  |
| 7/8 - 9   | 22,23             | 9    | 2,822 | 55 x 22                      | 5 | 22,10   | 7137         | ●            | ○         |  |  |  |
| 1 - 8   | 25,40             | 8    | 3,175 | 55 x 22                      | 5 | 25,27   | 7139         | ●            | ○         |  |  |  |

**3**

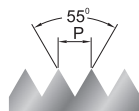
Przykład zamawiania / Example of order / Beispiel einer Bestellung:

N1-121001-7123  
DIN-EN 22 568 1/8-40 BSW HSS 800

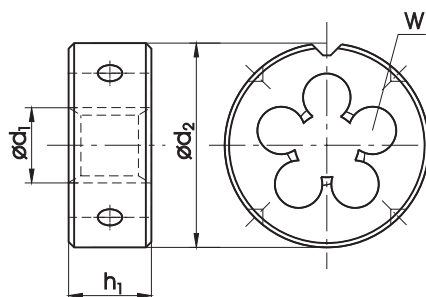
- Dostępne z magazynu, cena w cenniku  
Available from stock, the price in the price list / Ab Lager lieferbar, der Preis in der Preisliste
- Do szybkiej dostawy, cena na zapytanie  
For quick delivery, price on request / Für die schnelle Lieferung, Preis auf Anfrage

**Gwint calowy drobnozwojny Whitwortha  
BSF, BS-84:1956**

British Whitworth fine thread BSF, BS-84:1956  
Britisches Whitworth - Feingewinde BSF, BS-84:1956

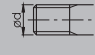


HSS



## DIN-EN 22 568



| Nazwa / Name / Bezeichnung                        |                   |      |       |                              |   |   | 800          | 800          |           |  |  |  |
|---|-------------------|------|-------|------------------------------|---|---|--------------|--------------|-----------|--|--|--|
| Materiał obrabiany / Material / Werkstoff         |                   |      |       |                              |   |   |              |              |           |  |  |  |
| Rodzaj materiału / Quality of material / Qualität |                   |      |       |                              |   |   | HSS          | HSS          |           |  |  |  |
| Wykonanie / Execution / Ausführung                |                   |      |       |                              |   |   |              | LH           |           |  |  |  |
| Nakrój / Chamfer / Anschnitt                      |                   |      |       |                              |   |   | 1,75P        | 1,75P        |           |  |  |  |
| Tolerancja / Tolerance / Toleranz                 |                   |      |       |                              |   |   | medium class | medium class |           |  |  |  |
| BSF   | $\varnothing d_1$ | 1"/P | P     | $\varnothing d_2 \times h_1$ | W |  | INDEX        | N1-121001    | N1-111001 |  |  |  |
| 3/16 - 32   | 4,76              | 32   | 0,794 | 20 x 7                       | 4 | 4,76  | 7225         | ●            | ○         |  |  |  |
| 1/4 - 26  | 6,35              | 26   | 0,977 | 20 x 7                       | 4 | 6,25  | 7227         | ●            | ○         |  |  |  |
| 5/16 - 22   | 7,94              | 22   | 1,155 | 25 x 9                       | 4 | 7,83  | 7228         | ●            | ○         |  |  |  |
| 3/8 - 20  | 9,53              | 20   | 1,270 | 30 x 11                      | 4 | 9,41  | 7229         | ●            | ○         |  |  |  |
| 7/16 - 18   | 11,11             | 18   | 1,411 | 30 x 11                      | 5 | 10,99   | 7230         | ●            | ○         |  |  |  |
| 1/2 - 16  | 12,70             | 16   | 1,588 | 38 x 10                      | 5 | 12,57   | 7231         | ●            | ○         |  |  |  |
| 9/16 - 16   | 14,29             | 16   | 1,588 | 38 x 10                      | 4 | 14,16   | 7232         | ●            | ○         |  |  |  |
| 5/8 - 14  | 15,88             | 14   | 1,814 | 45 x 14                      | 4 | 15,73   | 7233         | ●            | ○         |  |  |  |
| 3/4 - 12  | 19,05             | 12   | 2,117 | 45 x 14                      | 5 | 18,89   | 7235         | ●            | ○         |  |  |  |
| 7/8 - 11  | 22,23             | 11   | 2,309 | 55 x 22                      | 5 | 22,11   | 7237         | ●            | ○         |  |  |  |
| 1 - 10  | 25,40             | 10   | 2,504 | 55 x 22                      | 5 | 25,28   | 7239         | ●            | ○         |  |  |  |

3

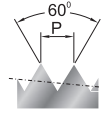
Przykład zamawiania / Example of order / Beispiel einer Bestellung:

N1-121001-7239  
DIN-EN 22 568 1-10 BSF HSS 800

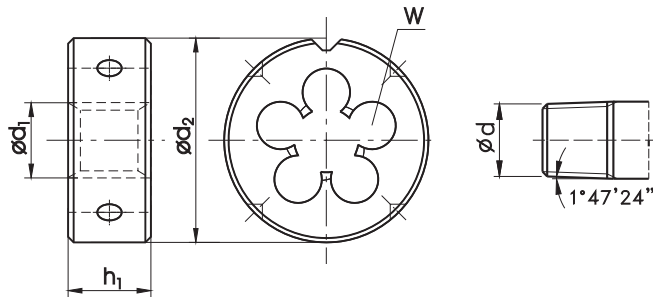
- Dostępne z magazynu, cena w cenniku  
Available from stock, the price in the price list / Ab Lager lieferbar, der Preis in der Preisliste
- Do szybkiej dostawy, cena na zapytanie  
For quick delivery, price on request / Für die schnelle Lieferung, Preis auf Anfrage

**Gwint amerykański rurowy stożkowy**  
**NPT 1:16, ANSI B-1.20.1**

American tapered pipe thread  
NPT 1:16, ANSI B-1.20.1  
Amerikanisches kegeliges Rohrgewinde  
NPT 1:16, ANSI B-1.20.1

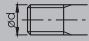


HSS



**DIN-EN 24 230**



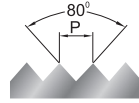
| <b>Nazwa / Name / Bezeichnung</b>                        |                   |        |       |                              |   |   | 800   |           |  |  |  |  |
|--|-------------------|--------|-------|------------------------------|---|---|-------|-----------|--|--|--|--|
| <b>Materiał obrabiany / Material / Werkstoff</b>         |                   |        |       |                              |   |   |       |           |  |  |  |  |
| <b>Rodzaj materiału / Quality of material / Qualität</b> |                   |        |       |                              |   |   | HSS   |           |  |  |  |  |
| <b>Wykonanie / Execution / Ausführung</b>                |                   |        |       |                              |   |   |       |           |  |  |  |  |
| <b>Nakrój / Chamfer / Anschnitt</b>                      |                   |        |       |                              |   |   | 2P    |           |  |  |  |  |
| <b>Tolerancja / Tolerance / Toleranz</b>                 |                   |        |       |                              |   |   |       |           |  |  |  |  |
| NPT  | $\varnothing d_1$ | 1"/P   | P     | $\varnothing d_2 \times h_1$ | W |  | INDEX | N1-121001 |  |  |  |  |
| 1/8"   | 9,728             | 27     | 0,941 | 30 x 11                      | 5 | 9,99  | 4623  | ●         |  |  |  |  |
| 1/4"   | 13,157            | 18     | 1,411 | 38 x 14                      | 5 | 13,26   | 4627  | ●         |  |  |  |  |
| 3/8"   | 16,662            | 18     | 1,411 | 45 x 18                      | 5 | 16,67   | 4629  | ●         |  |  |  |  |
| 1/2"   | 20,955            | 14     | 1,814 | 45 x 18                      | 6 | 20,71   | 4631  | ●         |  |  |  |  |
| 3/4"   | 26,441            | 14     | 1,814 | 55 x 22                      | 6 | 26,03   | 4635  | ●         |  |  |  |  |
| 1"   | 33,249            | 11.1/2 | 2,209 | 65 x 25                      | 7 | 32,59   | 4639  | ●         |  |  |  |  |

Przykład zamawiania / Example of order / Beispiel einer Bestellung:

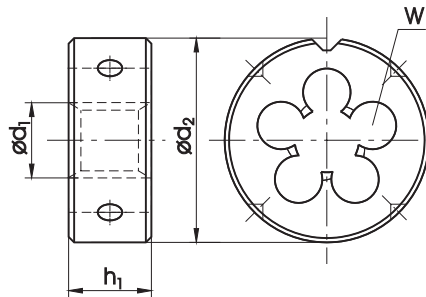
N1-121001-4627  
DIN-EN 24 230 1/4" NPT HSS 800

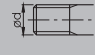
- Dostępne z magazynu, cena w cenniku  
Available from stock, the price in the price list / Ab Lager lieferbar, der Preis in der Preisliste
- Do szybkiej dostawy, cena na zapytanie  
For quick delivery, price on request / Für die schnelle Lieferung, Preis auf Anfrage

**Gwint do rurek instalacyjnych  
 stalowych Pg, DIN-40430**

 Steel conduit thread Pg, DIN-40430  
 Stahlpanzerrohr - Gewinde Pg, DIN-40430


HSS


**DIN-EN 22 568**


| <b>Nazwa / Name / Bezeichnung</b>                        |                   |      |       |                              |   |   | <b>800</b> |           |  |  |  |  |
|--|-------------------|------|-------|------------------------------|---|---|------------|-----------|--|--|--|--|
| <b>Materiał obrabiany / Material / Werkstoff</b>         |                   |      |       |                              |   |   |            |           |  |  |  |  |
| <b>Rodzaj materiału / Quality of material / Qualität</b> |                   |      |       |                              |   |   | HSS        |           |  |  |  |  |
| <b>Wykonanie / Execution / Ausführung</b>                |                   |      |       |                              |   |   |            |           |  |  |  |  |
| <b>Nakrój / Chamfer / Anschnitt</b>                      |                   |      |       |                              |   |   | 1,75P      |           |  |  |  |  |
| <b>Tolerancja / Tolerance / Toleranz</b>                 |                   |      |       |                              |   |   |            |           |  |  |  |  |
| Pg   | $\varnothing d_1$ | 1"/P | P     | $\varnothing d_2 \times h_1$ | W |  | INDEX      | N1-121001 |  |  |  |  |
| Pg 7   | 12,5              | 20   | 1,270 | 38 x 10                      | 4 | 12,40   | 8807       | ●         |  |  |  |  |
| Pg 9   | 15,2              | 18   | 1,411 | 45 x 14                      | 5 | 15,10   | 8809       | ●         |  |  |  |  |
| Pg 11  | 18,6              | 18   | 1,411 | 45 x 14                      | 5 | 18,50   | 8811       | ●         |  |  |  |  |
| Pg 13,5  | 20,4              | 18   | 1,411 | 45 x 14                      | 5 | 20,30   | 8813       | ●         |  |  |  |  |
| Pg 16  | 22,5              | 18   | 1,411 | 55 x 16                      | 5 | 22,40   | 8816       | ●         |  |  |  |  |
| Pg 21  | 28,3              | 16   | 1,588 | 65 x 18                      | 6 | 28,15   | 8821       | ●         |  |  |  |  |
| Pg 29  | 37,0              | 16   | 1,588 | 65 x 18                      | 7 | 36,85   | 8829       | ●         |  |  |  |  |
| Pg 36  | 47,0              | 16   | 1,588 | 90 x 22                      | 7 | 46,85   | 8836       | ○         |  |  |  |  |
| Pg 42  | 54,0              | 16   | 1,588 | 105 x 22                     | 9 | 53,85   | 8842       | ○         |  |  |  |  |
| Pg 48  | 59,3              | 16   | 1,588 | 105 x 22                     | 8 | 59,15   | 8848       | ○         |  |  |  |  |

**Gwint Pg jest zastępowany gwintem metrycznym drobnzwojnym MF wg normy DIN EN 60423 dostępnym na zapytanie**

Pg thread is replaced by metric fine MF according to DIN EN 60423 available on request  
 Pg-Gewinde wird durch metrisches Feingewinde ersetzt nach Norm DIN EN 60423 auf Anfrage