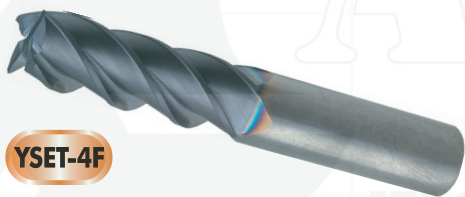
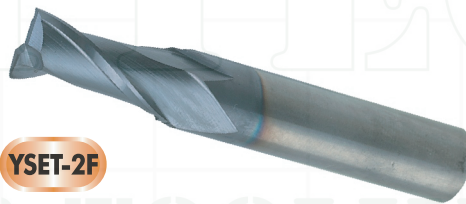


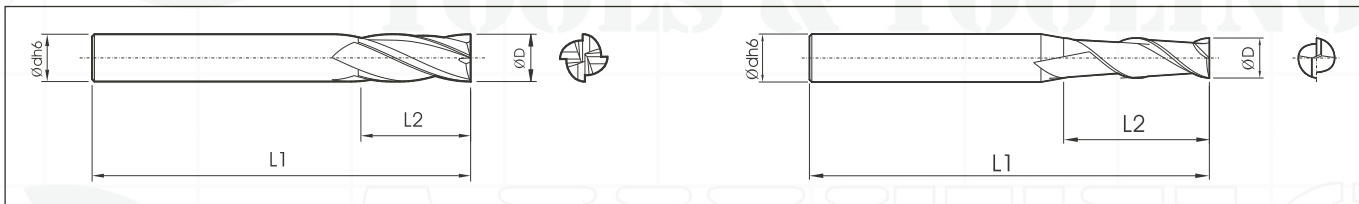
Solid Carbide End Mills



YSET-4F



YSET-2F



Model : YSET, YSEL

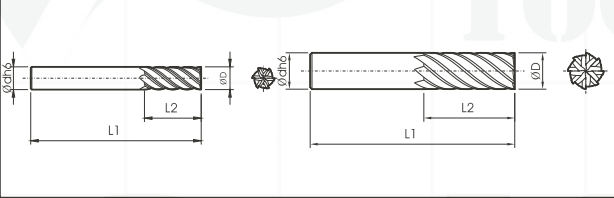
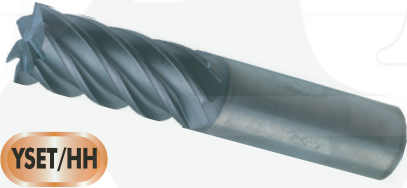
- ▶ Standard length(YSET) & Long length(YSEL)
- ▶ Extra fine Micro grain carbide, PVD TiAlN coated to provide strength, lubricity, wear resistance and freer cutting action.
- ▶ 30° regular helix spiral, square end, 2 & 4 flutes configuration
- ▶ Suitable for high performance and high productivity machining
- ▶ Applicable to wide range materials

* Ordering : Please mark number of flutes in the square blank .

(unit : mm)

| Code No. | ΦD | Φd | L1 | L2 | Available flutes |
|---------------------------------|------|------|-----|----|------------------|
| * Standard Length 2F, 4F | | | | | |
| YSET 2020 | 2.0 | 6.0 | 40 | 6 | 2 |
| YSET 2025 | 2.5 | | | 8 | |
| YSET 2030 | 3.0 | | 45 | 10 | |
| YSET 2040 | 4.0 | | | 12 | |
| YSET 050 | 5.0 | 8.0 | 50 | 15 | 2, 4 |
| YSET 060 | 6.0 | | | 20 | |
| YSET 2070 | 7.0 | 10.0 | 60 | 25 | 2 |
| YSET 080 | 8.0 | | | 30 | 2, 4 |
| YSET 2090 | 9.0 | 12.0 | 70 | 35 | 2 |
| YSET 100 | 10.0 | | | 40 | 2, 4 |
| YSET 2110 | 11.0 | 16.0 | 75 | 45 | 2 |
| YSET 120 | 12.0 | | | 55 | 2, 4 |
| YSET 140 | 14.0 | 20.0 | 80 | 60 | 2, 4 |
| YSET 150 | 15.0 | | | 70 | |
| YSET 160 | 16.0 | 20.0 | 90 | 80 | 2, 4 |
| YSET 180 | 18.0 | | | 95 | |
| YSET 200 | 20.0 | | 105 | 45 | |
| * Long Length 2F, 4F | | | | | |
| YSEL 2060 | 6.0 | 6.0 | 70 | 30 | 2 |
| YSEL 2080 | 8.0 | 8.0 | 80 | 35 | |
| YSEL 4100 | 10.0 | 10.0 | 108 | 40 | 4 |
| YSEL 4120 | 12.0 | 12.0 | | 45 | |
| YSEL 4160 | 16.0 | 16.0 | 120 | 55 | |
| YSEL 4200 | 20.0 | 20.0 | | 60 | |
| YSEL 4250 | 25.0 | 25.0 | 160 | 70 | |

Carbide High Helix End Mills



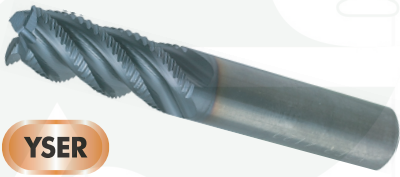
Model : YSET, Multi-flutes

- ▶ Standard length, High helix 40°, multi-flutes 6F & 8F configuration
- ▶ Extra fine Micro grain carbide, PVD TiAlN coated to provide strength, lubricity, wear resistance and freer cutting action.
- ▶ Finish milling operation
- ▶ Suitable for high performance and high productivity machining
- ▶ Applicable to wide range of material up to HRC60

Carbide End Mills and Cutters

| Code No. | ΦD | Φd | L1 | L2 | Number of flute |
|-----------|------|------|-----|----|-----------------|
| YSET 6060 | 6.0 | 6.0 | 50 | 15 | 6 |
| YSET 6080 | 8.0 | 8.0 | 60 | 20 | |
| YSET 6100 | 10.0 | 10.0 | 70 | 25 | |
| YSET 6120 | 12.0 | 12.0 | 75 | 30 | |
| YSET 6140 | 14.0 | 16.0 | 80 | 35 | |
| YSET 8160 | 16.0 | 16.0 | 90 | 40 | 8 |
| YSET 8200 | 20.0 | 20.0 | 105 | 45 | |
| YSET 8250 | 25.0 | 25.0 | 130 | 50 | |
| YSET 8320 | 32.0 | 32.0 | 150 | 65 | |

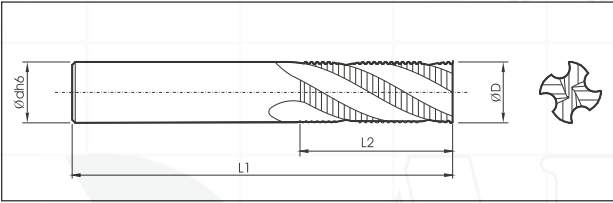
Carbide Roughing End Mills



YSER

Model : YSER

- ▶ Standard length, Regular helix 30°, 3, 4, 6 flute configuration
- ▶ Extra fine Micro grain carbide, PVD TiAlN coated to provide strength, lubricity, wear resistance and freer cutting action.
- ▶ Strongest cutting edge and smooth operation
- ▶ Applicable high feed rate in shoulder milling and slotting operation

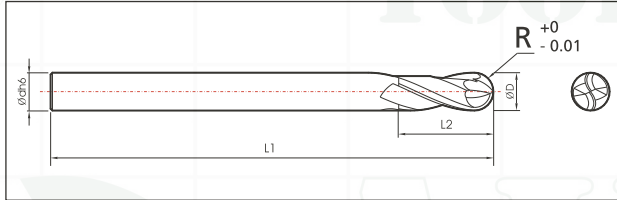


| Code No. | ΦD | Φd | L1 | L2 | Number of flute |
|-----------|------|------|-----|----|-----------------|
| YSER 3060 | 6.0 | 6.0 | 50 | 15 | 3 |
| YSER 3080 | 8.0 | 8.0 | 60 | 20 | |
| YSER 3100 | 10.0 | 10.0 | 70 | 25 | |
| YSER 4120 | 12.0 | 12.0 | 75 | 30 | 4 |
| YSER 4140 | 14.0 | 16.0 | 80 | 35 | |
| YSER 4160 | 16.0 | | 90 | 40 | |
| YSER 6200 | 20.0 | 20.0 | 105 | 45 | 6 |
| YSER 6250 | 25.0 | 25.0 | 130 | 50 | |

Carbide Ball End Mills



YSEB **YSEBL**



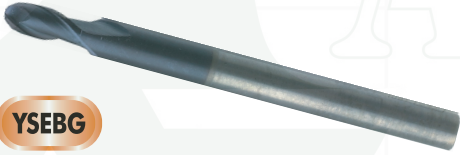
Model : YSEB, YSEBL

- ▶ Ball nose End Mill, Standard length(YSEB) & Long/Extra Long length(YSEBL)
- ▶ Extra fine Micro grain carbide, PVD TiAlN coated to Provide Strength, lubricity, wear resistance and freer cutting action
- ▶ 30° regular helix spiral, 2 flutes configuration
- ▶ Special geometry with eccentric cutting edge, high tolerance radius +0 ~ - 0.01 mm
- ▶ Applicable to wide range of material up to HRC60
- ▶ Suitable for high performance and high productivity machining

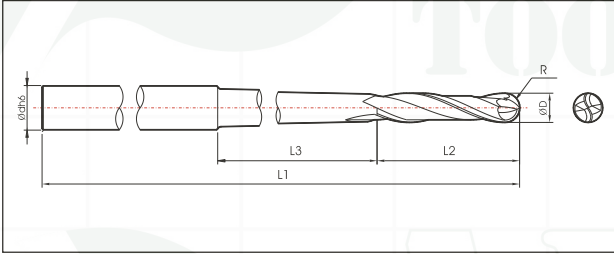
(unit : mm)

| Code No. | D | R | d | L1 | L2 |
|---------------------------------|------|------|----|-----|----|
| * Standard Length | | | | | |
| YSEB 1.0R | 2.0 | 1.0 | 6 | 60 | 5 |
| YSEB 1.5R | 3.0 | 1.5 | | | 7 |
| YSEB 2.0R | 4.0 | 2.0 | | | 8 |
| YSEB 2.5R | 5.0 | 2.5 | 8 | 70 | 10 |
| YSEB 3.0R | 6.0 | 3.0 | | | 16 |
| YSEB 3.5R | 7.0 | 3.5 | | | 18 |
| YSEB 4.0R | 8.0 | 4.0 | 10 | 80 | 20 |
| YSEB 4.5R | 9.0 | 4.5 | | | 22 |
| YSEB 5.0R | 10.0 | 5.0 | | | 25 |
| YSEB 6.0R | 12.0 | 6.0 | 12 | 90 | 30 |
| YSEB 7.0R | 14.0 | 7.0 | | | 32 |
| YSEB 8.0R | 16.0 | 8.0 | | | 35 |
| YSEB 10.0R | 20.0 | 10.0 | 16 | 108 | 40 |
| YSEB 12.5R | 25.0 | 12.5 | | | 50 |
| YSEB 16.0R | 32.0 | 16.0 | | | 60 |
| * Long/Extra long Length | | | | | |
| YSEBL 3.0R110 | 6.0 | 3.0 | 6 | 110 | 20 |
| YSEBL 3.0R160 | | | | 160 | 25 |
| YSEBL 4.0R160 | 8.0 | 4.0 | 8 | 200 | 30 |
| YSEBL 4.0R200 | | | | | 35 |
| YSEBL 5.0R160 | 10.0 | 5.0 | 10 | 160 | 40 |
| YSEBL 5.0R200 | | | | 200 | 45 |
| YSEBL 6.0R160 | 12.0 | 6.0 | 12 | 160 | 50 |
| YSEBL 6.0R200 | | | | 200 | 55 |
| YSEBL 8.0R160 | 16.0 | 8.0 | 16 | 160 | 60 |
| YSEBL 8.0R200 | | | | 200 | 65 |
| YSEBL 10.0R160 | 20.0 | 10.0 | 20 | 160 | 70 |
| YSEBL 10.0R200 | | | | 75 | |
| YSEBL 12.5R200 | 25.0 | 12.5 | 25 | 200 | 85 |
| YSEBL 16.0R200 | 32.0 | 16.0 | 32 | 200 | 95 |

Carbide Long Ball End Mills For graphite



YSEBG



Model : YSEBG

- ▶ Ball nose End Mill, Long length exclusively used for Graphite material
- ▶ Extra fine Micro grain carbide, PVD TiAlN coated to provide strength, lubricity, wear resistance and freer cutting action.
- ▶ 30° regular helix spiral, 2 flutes configuration
- ▶ Special geometry with eccentric cutting edge, high tolerance radius +0 ~ - 0.01mm
- ▶ Suitable for high performance and high productivity machining
- ▶ High strength TRS 4,300N/mm

(unit : mm)

| Code No. | D | R | d | L1 | L2 | L3 |
|---------------|------|-----|------|-----|----|----|
| YSEBG 1.0R160 | 2.0 | 1.0 | 6.0 | 160 | 6 | 95 |
| YSEBG 1.5R160 | 3.0 | 1.5 | | | 8 | 80 |
| YSEBG 2.0R160 | 4.0 | 2.0 | 8.0 | | 10 | 85 |
| YSEBG 3.0R160 | 6.0 | 3.0 | 10.0 | 200 | 20 | 80 |
| YSEBG 3.0R200 | | | | | | |
| YSEBG 4.0R160 | 8.0 | 4.0 | 12.0 | 160 | 30 | 70 |
| YSEBG 4.0R200 | | | | 200 | | |
| YSEBG 5.0R160 | 10.0 | 5.0 | 16.0 | 160 | 40 | 55 |
| YSEBG 5.0R200 | | | | 200 | | |
| YSEBG 6.0R160 | 12.0 | 6.0 | 16.0 | 160 | 50 | 50 |
| YSEBG 6.0R200 | | | | 200 | | 80 |
| YSEBG 8.0R200 | 16.0 | 8.0 | 20.0 | 200 | 60 | 85 |